



MILTECH™ 470 Smart Hub

Military Grade 5 X USB2 + 2 X 10/100/1000BT Ethernet
Rugged USB to Ethernet while charging

The MILTECH 470, is a game-changer in military connectivity. This rugged, military-grade USB and Ethernet smart hub provides seamless mesh connectivity between multiple USB devices over Ethernet while charging.

The MILTECH 470 offers exceptional versatility. With Power Delivery 3.0 DRP protocol, it can charge up to 5 EUDs while maintaining full data connectivity over USB-C interfaces. Its wide input range of 12-48VDC, fully compliant with MIL-STD-704 and 1275, ensures fast charging for Android tablets across all ports. Moreover, its ruggedized design, built to meet MIL-STD-810H standards, withstands extreme temperatures, shocks, and vibrations.

The MILTECH 470 supports USB Power Delivery 3.0 Dual Role Power Mode (DRP) circuitry for each one of the five external USB ports (act as PD UFP during charge).

This unique functionality allows fast charging (up to 5V/3A) the external USB equipment (e.g., Tablets/ Smartphone) while they are connected and operational with the Ethernet Network.

A dedicated USB2 management interface port allows an external host to manage the each of the ports enable/ disable both communication and power while providing full BIT.

Milpower's proven wide range (12-48) DC-DC is integrated within the MILTECH-470 unit, allowing it to operate from varies external DC sources with all the required input protections while generating the required power for a simultaneous fast charge of up to 5 external USB devices.

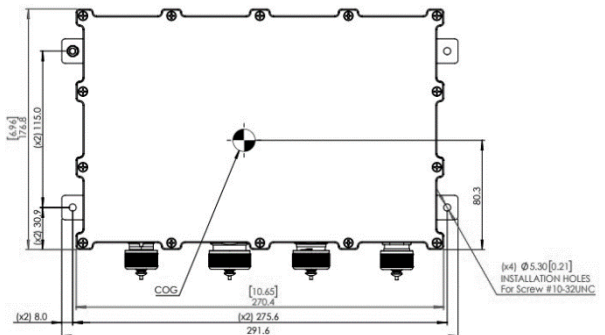
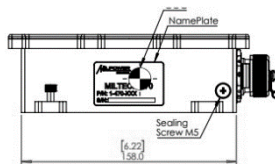
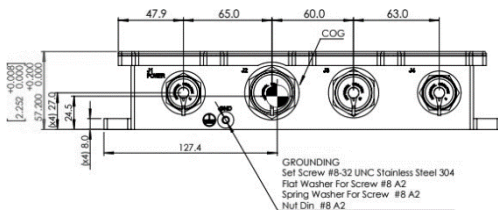


SPECIFICATIONS

UNIT DIMENSIONS	270.4mm(L) x 176.8.3mm(W) x 57.2mm(H) 10.65" (L) x 6.96" (W) x 2.25" (H) Weight: ~2500gr Installation Holes: 4 x #10-32UNC Screws
UNIT INTERFACES	J1 (Power): D38999/24WB98PN Shell Size 11 J2 (USB): D38999/24WD35SN Shell Size 15 J3 (Ethernet): D38999/24WC35SN Shell Size 13 J4 (Service): D38999/24WB35SN Shell Size 11
POWER INPUT	12-48V DC input range. Note: based on integrated Enercon M7029-17 Module



SPECIFICATIONS	
POWER CONSUMPTION	~4W (Idle mode, no external devices connected) ~60W (In 5V/1.5A charge on all 5 USB ports) ~114W (In 5V/3A charge on all 5 USB ports)
COMMUNICATIONS PORTS	5 x USB2 device ports with Power Delivery SRC DRP capability (5V/3A max each) 2 x 10/100/1000BT Copper ports (integrated magnetics + ESD protection)
MANAGEMENT	Based on dedicated USB2 port for external host connectivity Host console commands for identifying external devices status, enabling/disabling device ports (power/data) and performing unit BIT
EMI/EMC ENVIRONMENTAL	MILSTD-461G MILSTD-810H MILSTD-704A IP67
INSTALLATION	Installation on any flat surface with 4 x #10-32UNC Screws
COOLING	No Moving Parts, Conduction Cooling
OPERATING TEMP	-40°C to +85°C (-40°F to +185°F) Cold Start-Up
STORAGE TEMP	-40°C to +85°C (-40°F to +185°F)



Standard Models List (for other options, consult factory)

Part Number	Description
1-470 -000	Managed Military Grade 5 X USB2 + 2 X 10/100/1000BT Ethernet, inc. PD 3.0 fast charge

- Additional standard configurations available. **Contact factory for more details.**
- All of our products can be configured to comply with EU REACH, ROHS regulations.

Note: Specifications are subject to change without prior notice by the manufacturer.